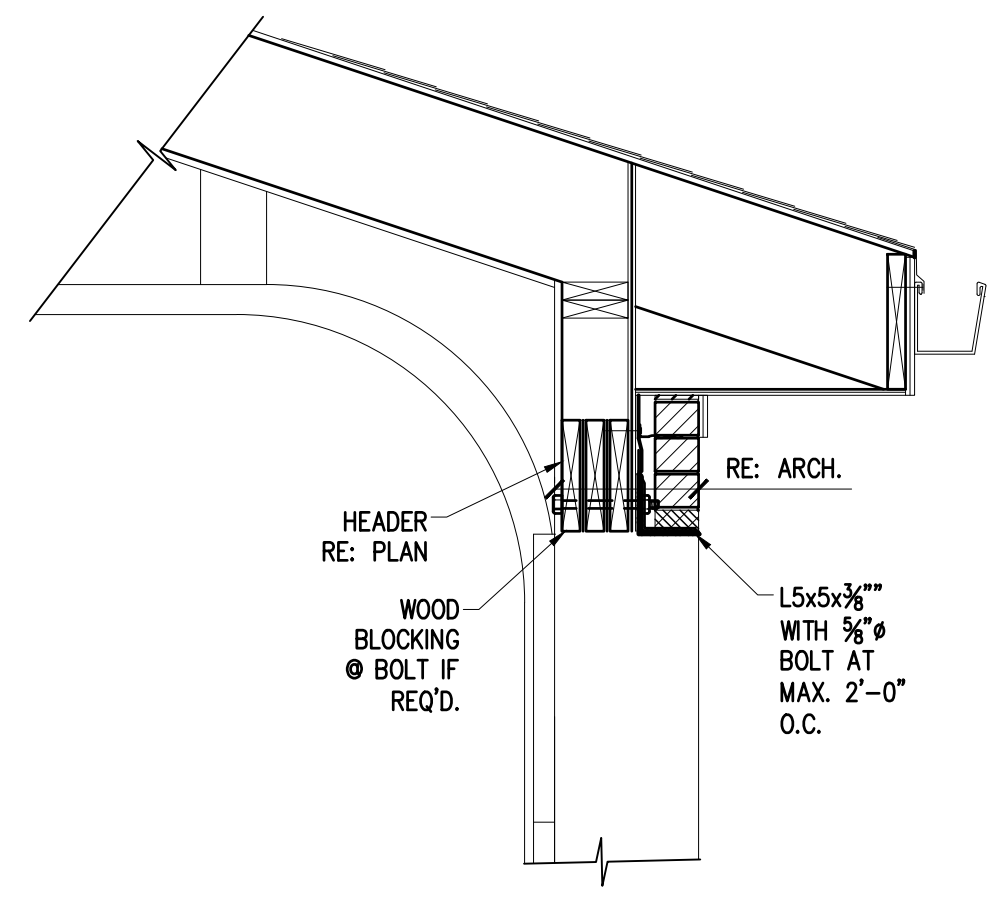
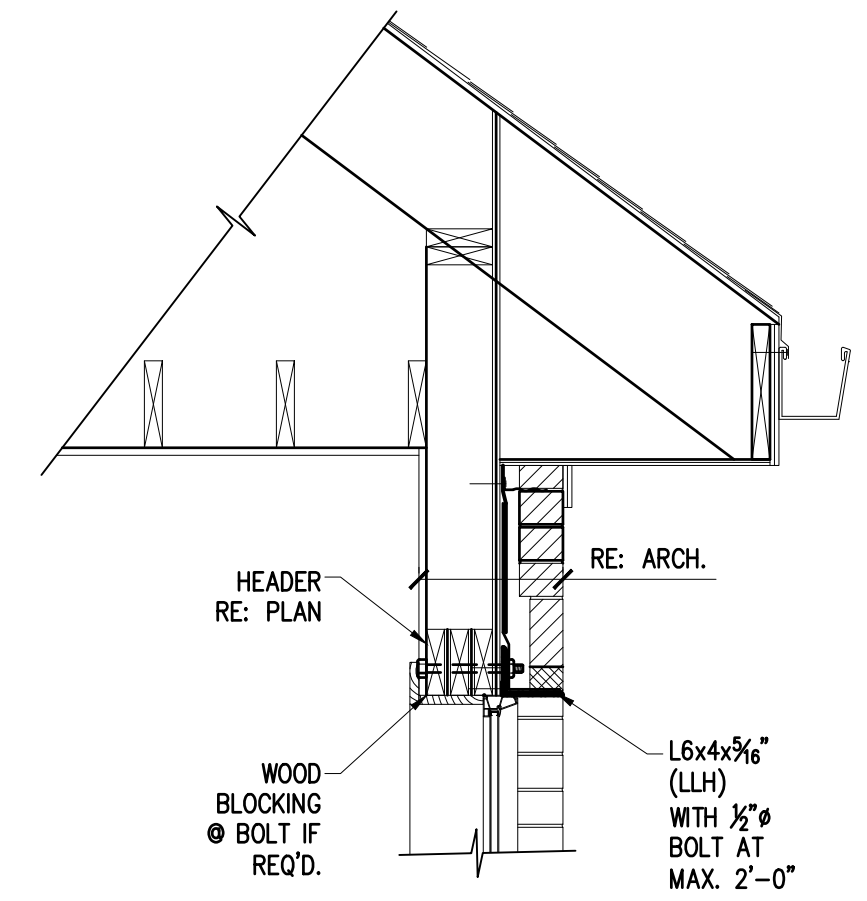


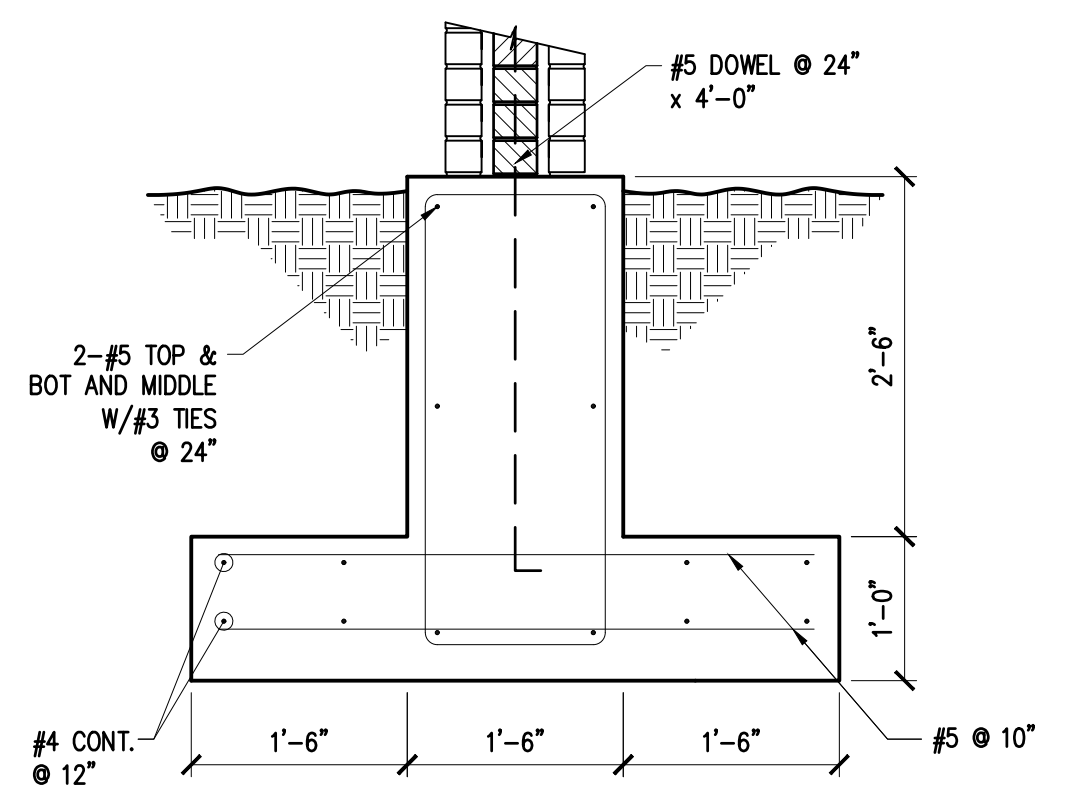
1 DETAIL: AT DOOR LINEL



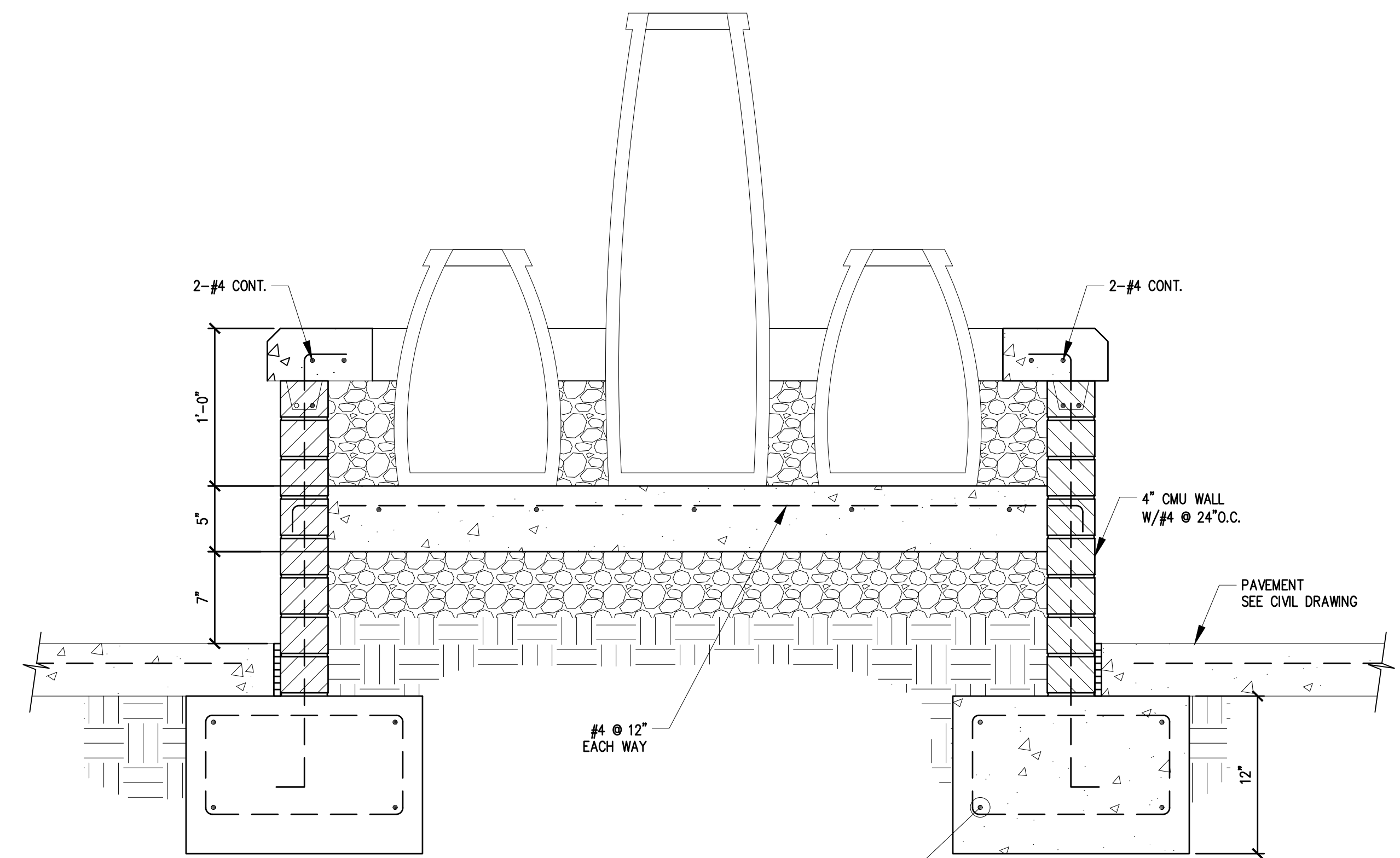
2 DETAIL: AT GARAGE LINEL



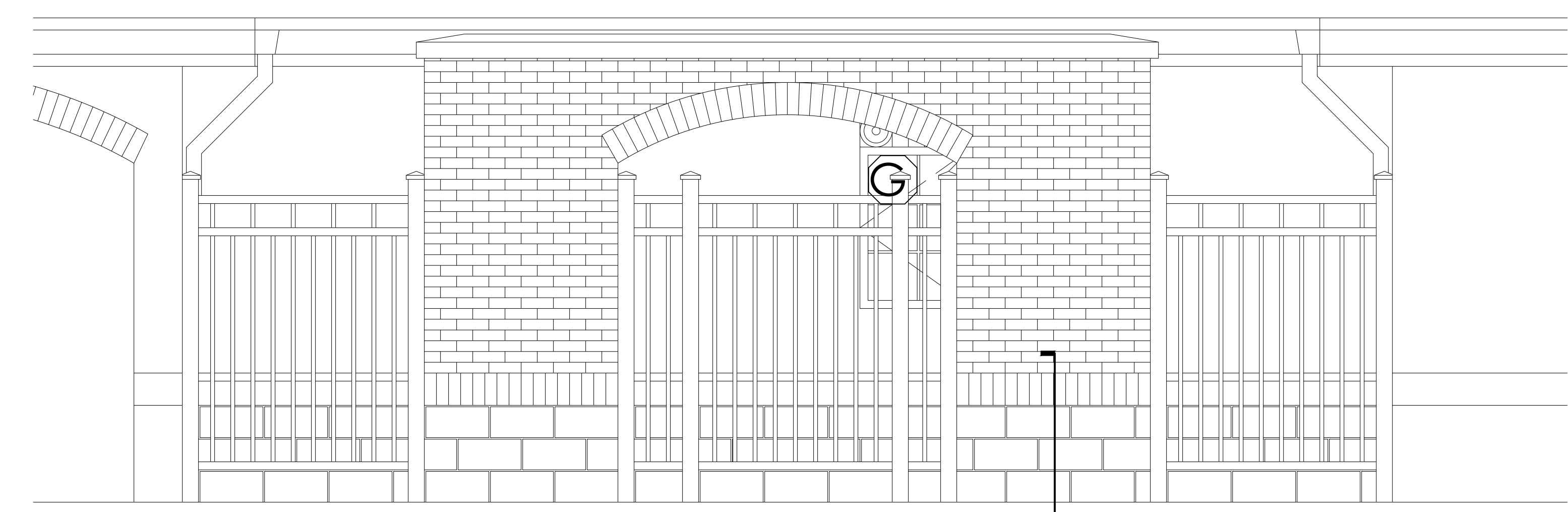
3 DETAIL: AT WINDOW LINEL



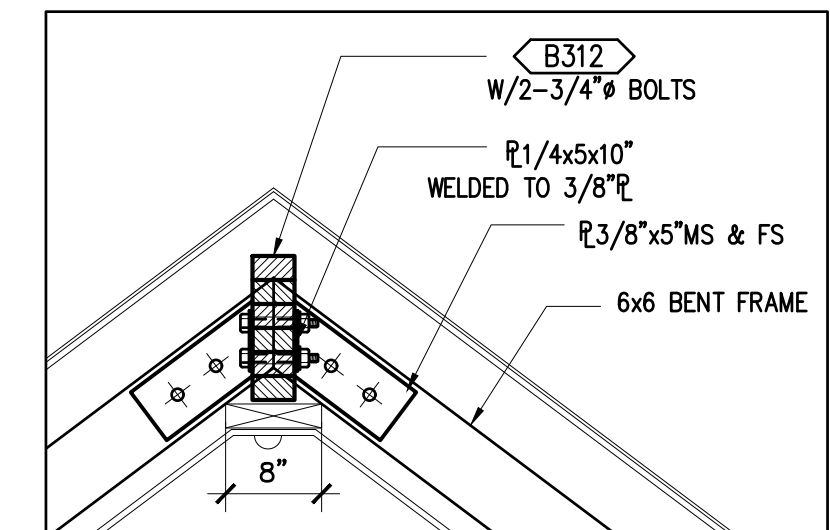
1 SECTION: GATE WALL FOUNDATION DETAIL



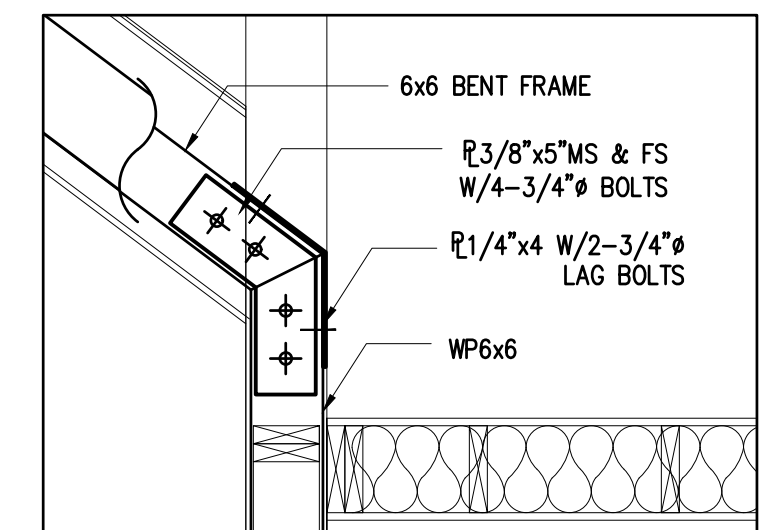
FOUNDATION AT FOUNTAIN
SCALE: 1 1/2" = 1'-0"



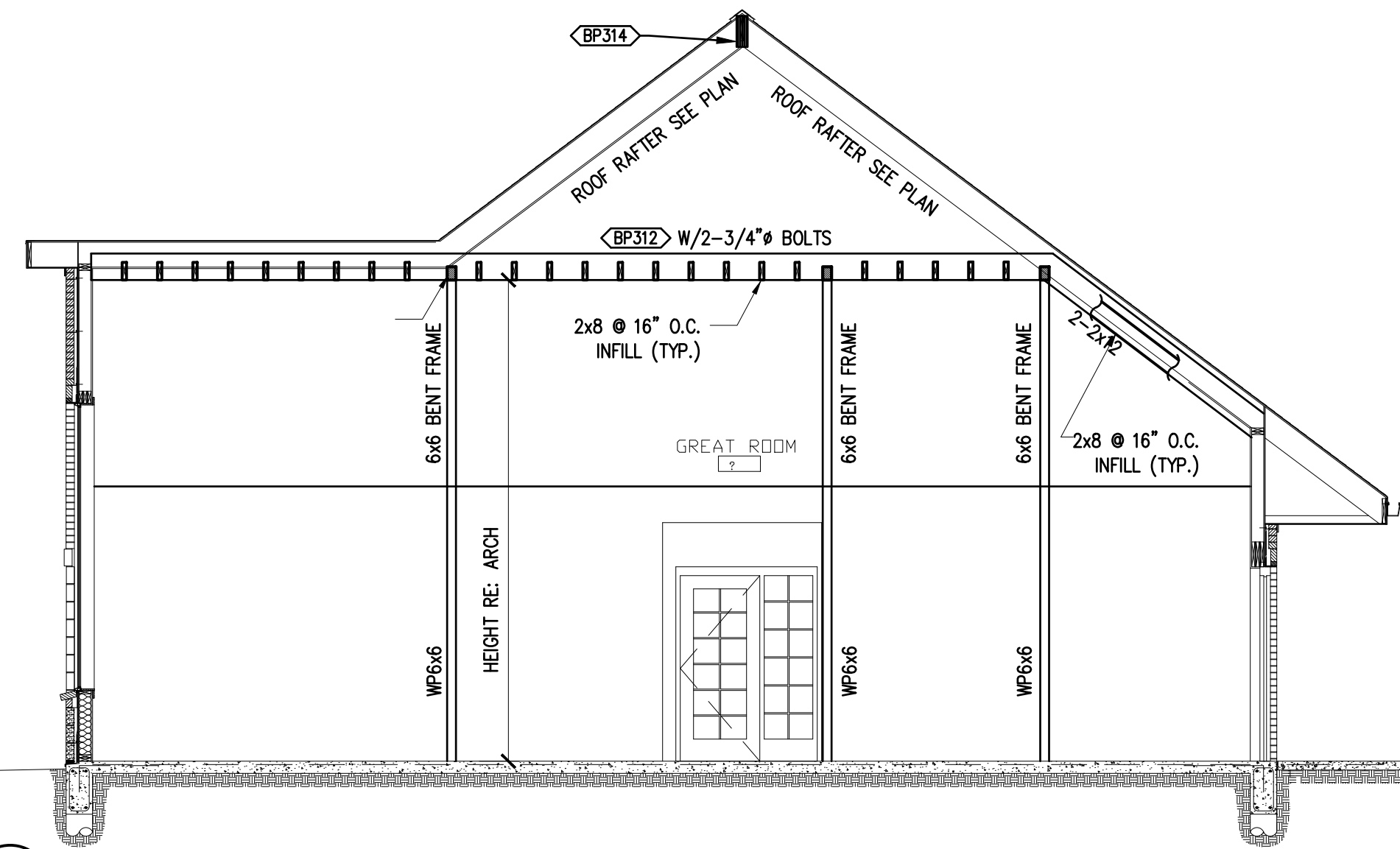
GATE ENTRANCE ELEVATION/FOUNDATION
SCALE: 1 1/2" = 1'-0"



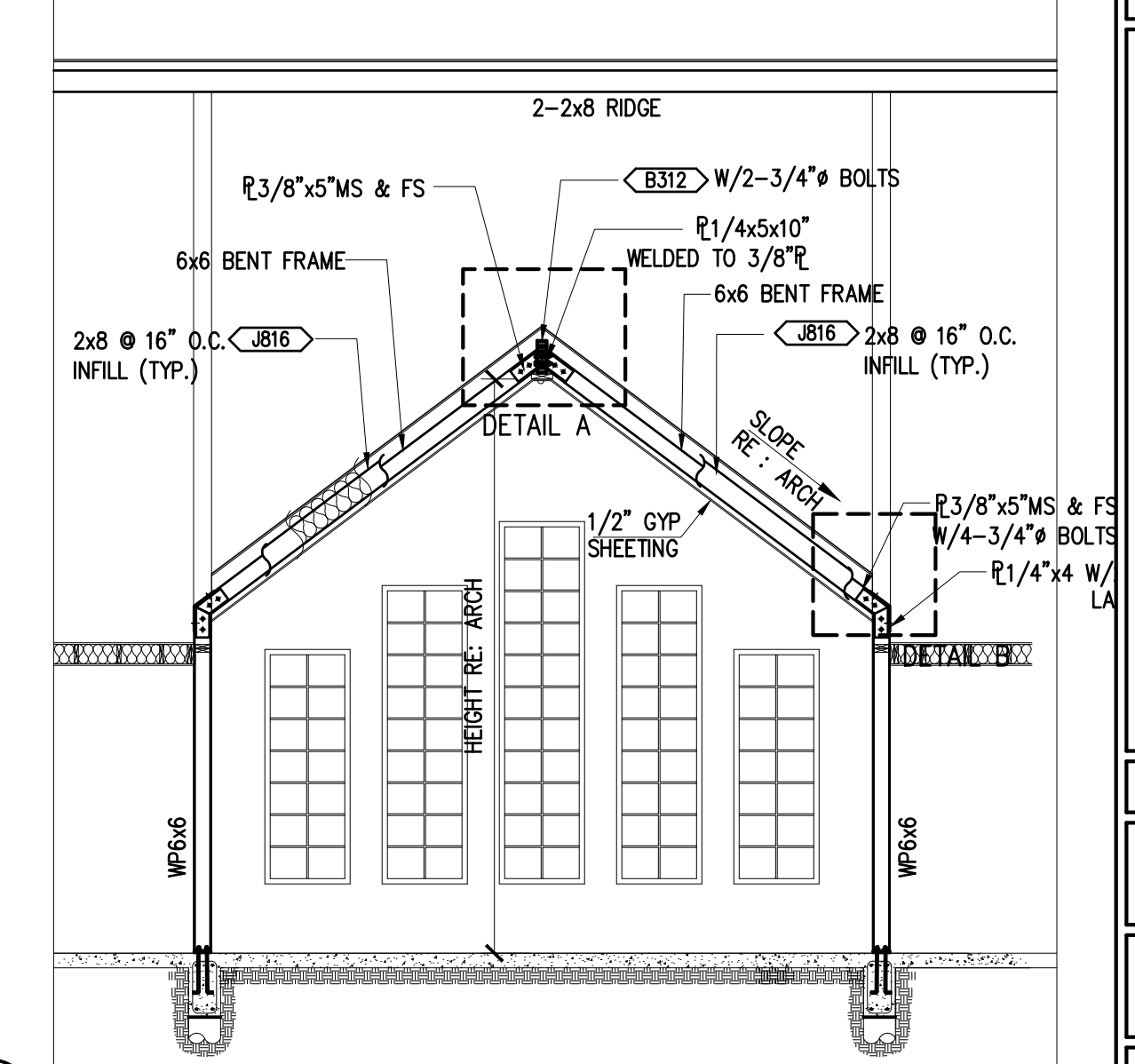
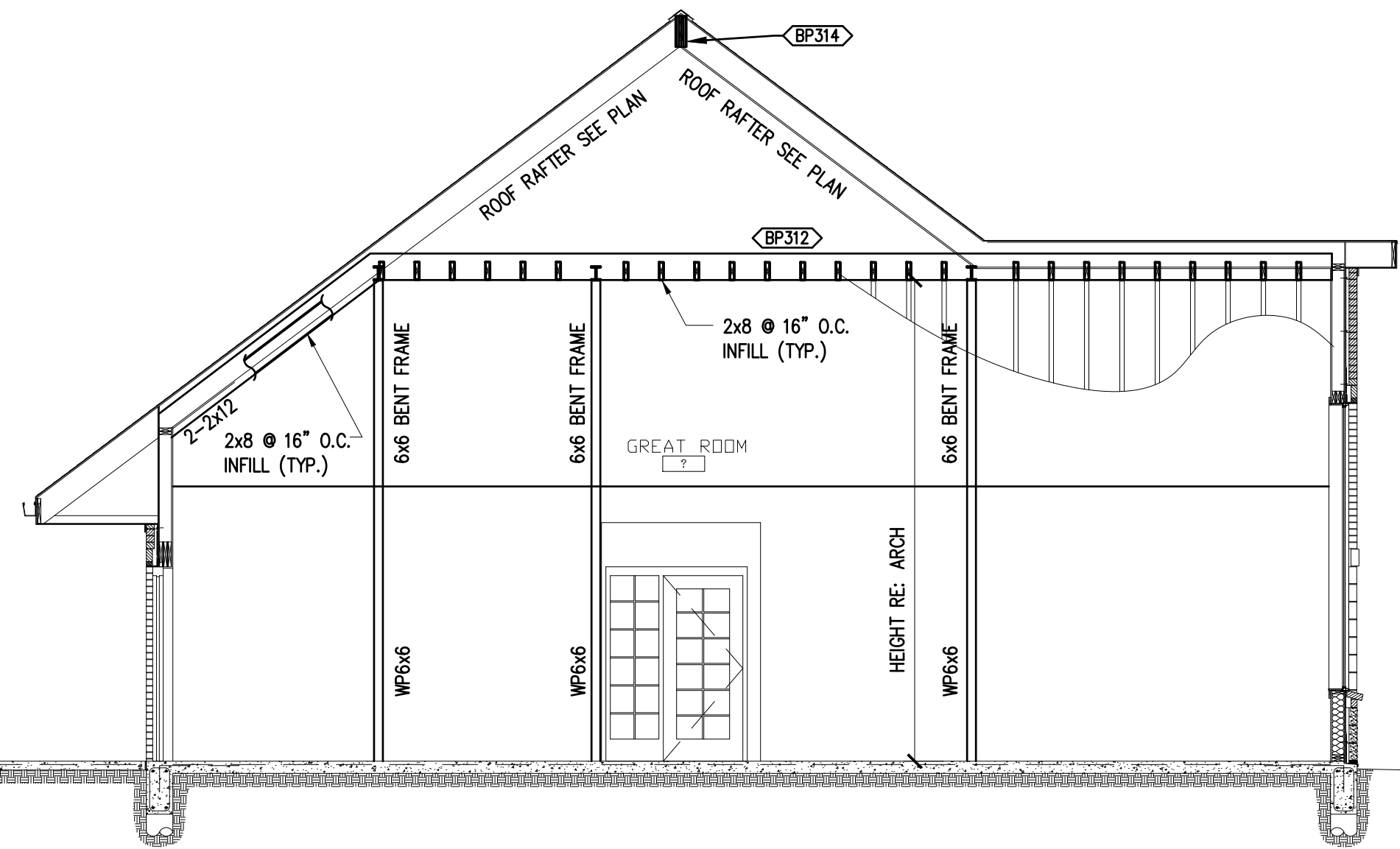
DETAIL A
SCALE: 3/4" = 1'-0"



DETAIL B
SCALE: 3/4" = 1'-0"



2 SECTION: AT GREAT ROOM



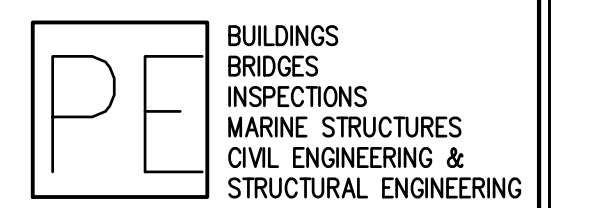
4 SECTION: AT GREAT ROOM

LINTEL
DETAILS
&
FOUNDATION
SECTIONS

OPTIMUM PERSONAL CARE PH.2
1110 LAKEVIEW DRIVE
SUGAR LAND, TX. 77478

ISSUE HISTORY	
DATE	ISSUED FOR
	CLIENT REVIEW
	PERMIT
	CONSTRUCTION

09/10/15



PARAMOUNT
ENGINEERING
LLC

10145 LONG POINT DR.
HOUSTON, TX 77043
TEL: (713) 636-9977
FAX: (713) 888-9872
CEL: (713) 204-1742

TBPE REGISTRATION # F-3394
DRAWN BY: Z.A. CHECKED BY: M.M.

PROJ. NO.: PE12-225

SHEET: S11