

LUMINAIRE SCHEDULE

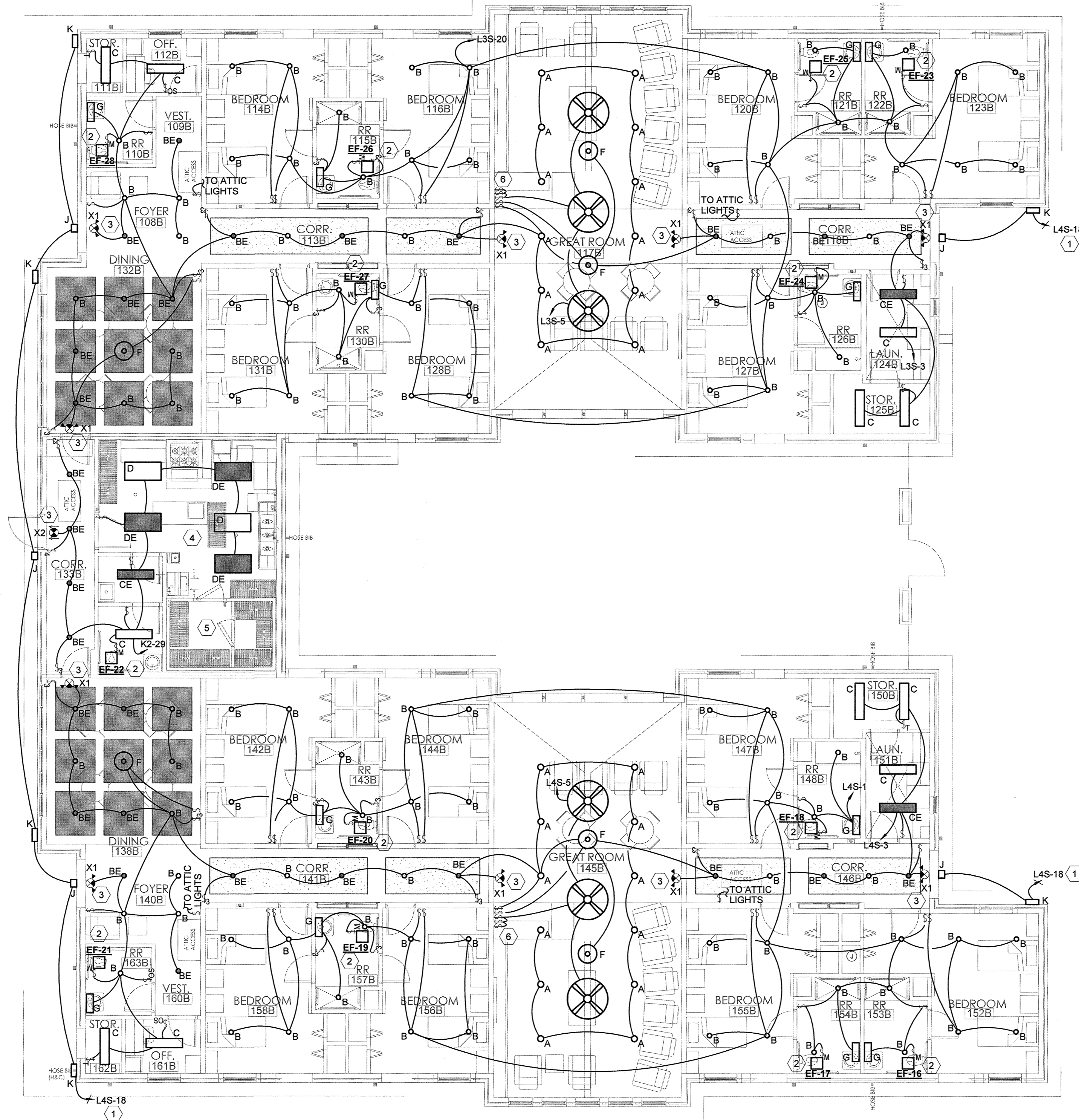
TYPE	MANUFACTURER	DESCRIPTION	MOUNTING	LAMPING	VOLT S	REMARKS
A	CON-TECH LIGHTING : CTL804L2VS-35N-P	LED TRACK HEAD	SURFACE	INTEGRATED LED	120	1,2
B	LITHONIA : 6BPMW HLED 30K90CRI	6" LED DOWNLIGHT	RECESSED	INTEGRATED LED	120	1,2
BE	LITHONIA : 6BPMW HLED 30K90CRI EL14L	6" LED DOWNLIGHT w/ 90 MIN 1400 LUMEN BATTERY BACKUP	RECESSED	INTEGRATED LED	120	1,2
C	LITHONIA : LBL4 60L MVOLT EOHN LP830	1' X 4' LINEAR LED FIXTURE	SURFACE	INTEGRATED LED	120	1,2
CE	LITHONIA : LBL4 60L MVOLT EOHN LP830 EL14L	1' X 4' LINEAR LED FIXTURE w/ 90 MIN 1400 LUMEN BATTERY BACKUP	SURFACE	INTEGRATED LED	120	1,2
D	LITHONIA : 2VTLX4 72L ADP MVOLT LP830	2' X 4' LINEAR LED FIXTURE	RECESSED	INTEGRATED LED	120	1,2
DE	LITHONIA : 2VTLX4 72L ADP MVOLT LP830 EL14L	2' X 4' LINEAR LED FIXTURE w/ 90 MIN 1400 LUMEN BATTERY BACKUP	RECESSED	INTEGRATED LED	120	1,2
F	VISA LIGHTING : MERIDIAN CP5702 L30K	3" DIAMETER LED PENDANT FIXTURE	PENDANT	INTEGRATED LED	120	1,3
G	MODERN FORMS : WS-3226	BATHROOM VANITY FIXTURE	SURFACE	INTEGRATED LED	120	1,2
J	DUAL LITE : PG-W	EXTERIOR NORMAL-OFF EMERGENCY FIXTURE	SURFACE	INTEGRATED LED	120	1
K	LITHONIA : OLWX1 LED 40W 40K DDB	EXTERIOR WALL PACK	SURFACE	INTEGRATED LED	120	1,2
M	LITHONIA : C132 MVOLT GEB10RS	4' FLUORESCENT STRIP FIXTURE WITH WIRE GUARD	SURFACE	1 , 32W T8	120	1
N	TBD	GENERATOR LIGHT: FIXTURE & MOUNTING MATCHES FIXTURE USED FOR GENERATOR #1	-	-	120	1
X1	TBD	SINGLE FACED EXIT SIGN w/ EMERGENCY LIGHT	SURFACE	INTEGRATED LED	120	1
X2	TBD	TWO SIDED EXIT SIGN	SURFACE	INTEGRATED LED	120	1

REMARKS:

1. FINAL SELECTION OF FIXTURE SHALL BE APPROVED BY OWNER/ARCHITECT PRIOR TO PURCHASE.
2. LED COLOR TEMPERATURE SHALL BE 3000K FOR THESE FIXTURE.
3. LED COLOR TEMPERATURE SHALL BE 3500K FOR THESE FIXTURE.

KEYED NOTES

1. CIRCUIT SHALL BE ROUTED THROUGH RELAY PANEL "RP-4".
2. EXHAUST FAN SHALL BE SWITCHED WITH LIGHTS.
3. CONTRACTOR SHALL SERVE FIXTURE FROM UNSWITCHED PORTION OF THE LIGHTING CIRCUIT IN THIS AREA.
4. KITCHEN FOOD PREPARATION AREA LIGHTING REQUIREMENT. PROVIDE AT LEAST 50 FOOT-CANDLES OF LIGHT TO ALL WORKING SURFACES
5. FOOD STORAGE AREA LIGHTING REQUIREMENT. PROVIDE AT LEAST 10 FOOT-CANDLES AT A DISTANCE OF 30 INCHES ABOVE THE FLOOR IN WALK-IN REFRIGERATION UNITS AND DRY FOOD STORAGE AREAS.
6. CONTRACTOR SHALL PROVIDE AND INSTALL THREE(3) WALL MOUNTED FAN SPEED CONTROLLERS (LUTRON NTFS-6E-XX OR SIMILAR - XX DENOTES COLOR). ONE(1) CONTROLLER AND SWITCH LEG SHALL BE INSTALLED PER FAN.

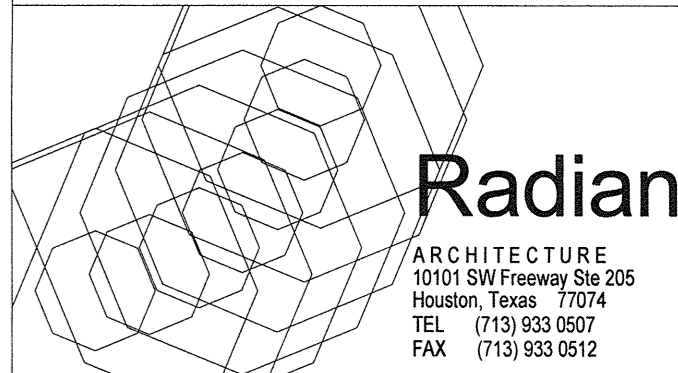


REFER TO ARCHITECTURAL DRAWINGS FOR ADDITIONAL PHASING INFORMATION.

1 ELECTRICAL LIGHTING PLAN - AREA B  
1/8" = 1'-0"

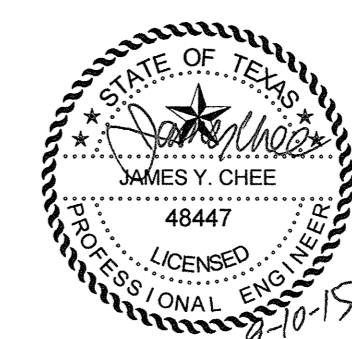


OPTIMUM CARE  
SUGAR LAND, TEXAS



Revision Schedule

#	Date	Description
3	09-04-15	PERMIT REVISIONS



ENGINEERS  
PLANNERS  
SCIENTISTS  
CONSTRUCTION MANAGERS  
**KCI**  
801 TRAVIS, SUITE 2000  
HOUSTON, TX 77002  
TECHNOLOGIES Ph: 713-237-9800 | Fax: 713-237-9801  
Texas Registered Engineering Firm F-10573

Project No.  
ELECTRICAL LIGHTING  
PLAN - AREA B  
Sheet No.

3  
**E2.02**